

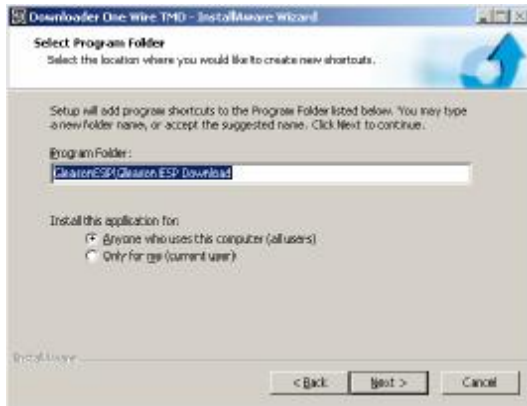


M6000 Software Installation Guide. Do not connect the m6000 to the downloader until instructed to do so.

Insert CD into CD Drive and you should see the following:



Click on Next to continue.



Click on Next to continue.

Once the software is installed, double-click on this icon to continue.



Gleason ESP
Download



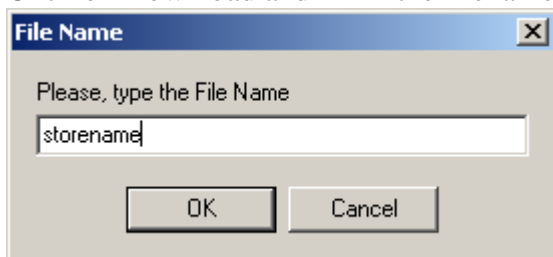
When you see the following screen you are ready to download.



Connect the m6000 to the downloader; the information above will fill in as seen below.



Click on Download and fill in the filename as seen below (**DO NOT INCLUDE .TMD**)

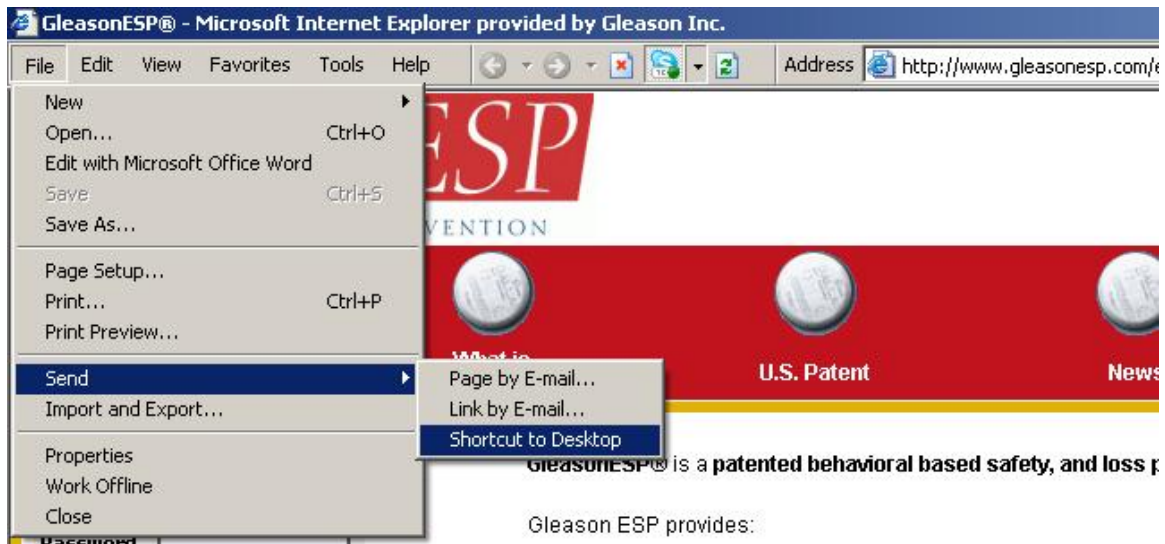


Hit OK to continue. Verify the date/time is correct, hit Set Clock if this is incorrect. Hit Exit when completed.



Gleason ESP Web Shortcut Creation.

Next, open up your web browser and go to www.gleasonesp.com. Click on File, Send, Shortcut to Desktop.



Close the webpage, and right click on the following icon, and rename to “Gleason ESP Upload”

